

Updates from the CadLab

Current Research Opportunities

<https://cadlab-research.webnode.com/how-to-participate/>

Attention families with adolescents/young adults (13-23 yrs) with speech challenges and motor disabilities (e.g., cerebral palsy, Down syndrome, acquired brain injury, etc.) We seek participants for studies to promote successful social interactions and communicative participation!

Study 1: Understanding the Social Interaction and Participation Experiences of Adolescents/Young Adults with Speech Disabilities

What will you and your child do? Fill out questionnaires and participate in an interview about your child's social experiences

Why? Our goal is to understand the social interaction experiences of adolescents and young adults with speech disorders. We hope this information will improve the design and implementation of speech assessments and interventions that support positive social experiences

Other info:

- Each participant will receive \$50 upon completion of the study
- See our website (listed above) or email k.connaghan@northeastern.edu
- This study has been approved by the Northeastern University IRB (#17-05-27)

Study 2: Usability of Social Participation and Navigation (SPAN), a Social Participation Intervention, with Adolescents/Young Adults with Speech Impairment

What will you and your child do? Use the web-based Social Participation and Navigation (SPAN) intervention and provide feedback through an interview and questionnaire

Why? Our goal is to adapt a social participation intervention to children and young adults with motor speech disorders to support positive social experiences

Other info:

- Each participant will receive \$60 upon completion of the study
- See our website (listed above) or email k.connaghan@northeastern.edu
- This study has been approved by the Northeastern University IRB (#18-03-05)

Current CadLab Activities

Our work in the Communication Analysis & Design Laboratory (CadLab) continues to focus on prosody (rate, rhythm, timing, intonation) produced by children and adults with and without motor speech challenges. This work helps us to understand how motor speech disorders affect social and communicative participation, as well as provides the foundation for developing effective interventions.

Dr. Connaghan's current projects are designed to understand the social impacts of motor speech challenges during adolescence/young adulthood and to develop efficacious interventions to promote successful social interactions and participation. Her work is supported by funding from:

1. **National Institute of Disability, Independent Living, and Rehabilitation Research**
(*Mary Switzer Merit Fellowship*)
Social Communication and Participation of Adolescents with Motor Speech Disability
2. **National Center for Advancing Translational Sciences, NIH** (UL1TR002544)
(*Tufts CTSI Pilot Grant*)
Adaptation and Usability of Social Participant and Navigation (SPAN) for Adolescent Speakers with Dysarthria

Dr. Patel continues her research and serves as CEO of VocalID. She recently initiated the Voice Preservation Clinic at the NU Speech-Language and Hearing Center. She's an avid invited speaker at national and international conferences. Recent talks include Grand Rounds at Vanderbilt University, the keynote speaker and the National Copy Editors Association Gala and presidential invited speaker at Salem College. She has two co-authored book chapters under review and was recently awarded two patents.

Recent Presentations/Publications:

Zimmerman, E., **Connaghan K.P.**, Hoover, J., Alu, D. & Peters, J. (2019). [Is feeding the new play? Examination of the maternal language and prosody used during infant feeding.](#) *Infant Behavior and Development*, 54, 120-132.

Brumberg, J. S., Thorson, J. C., & **Patel, R.** (2018). The Prosodic Marionette: A method to visualize speech prosody and assess perceptual and expressive prosodic abilities. *Speech Communication*, 104, 95-105.

Connaghan, K.P. & Kopp, Z. Speech accommodation by adolescents across communication partners. Acoustical Society of America, Victoria, BC, Canada, 2018.

Connaghan, K.P. Social interaction and participation experiences of adolescents with motor speech disorders. Presentation to Doctoral Seminar in Rehabilitation Research, MGH Institute of Health Professions (October 2018).

Connaghan, K.P., Reilly, D., & Patel, R. Listener impressions of speakers with dysarthria secondary to cerebral palsy. Conference on Speech Motor Control, Savannah, GA, 2018.

Current Lab Members



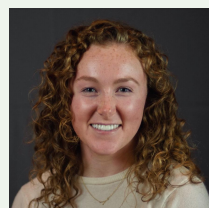
Rupal Patel
Lab Director



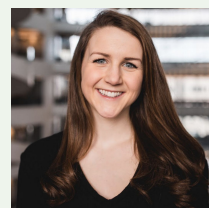
Kathryn Connaghan
Assoc. Research Scientist



Christina Grassie
B.S. Neuroscience Student



Jessica Rickwood
SLP Masters Student



Megan Romanczyk
SLP Masters Student



Montana Tally
SLP Masters Student

Follow This Link to Contact Us and Get Involved Today!

<https://cadlab-research.webnode.com/contact-us/>